

The background of the entire image is a sunset scene with a silhouette of a person wearing a cap and holding a long-barreled rifle. A dog is also silhouetted in the foreground. The sky is filled with orange and yellow clouds, and a few birds are visible in the upper right. The thermal imaging device is shown in a 3D perspective view on the right side of the image.

# **TA Gen2 Aquila Series** **Clip-on Thermal Imaging Attachment**

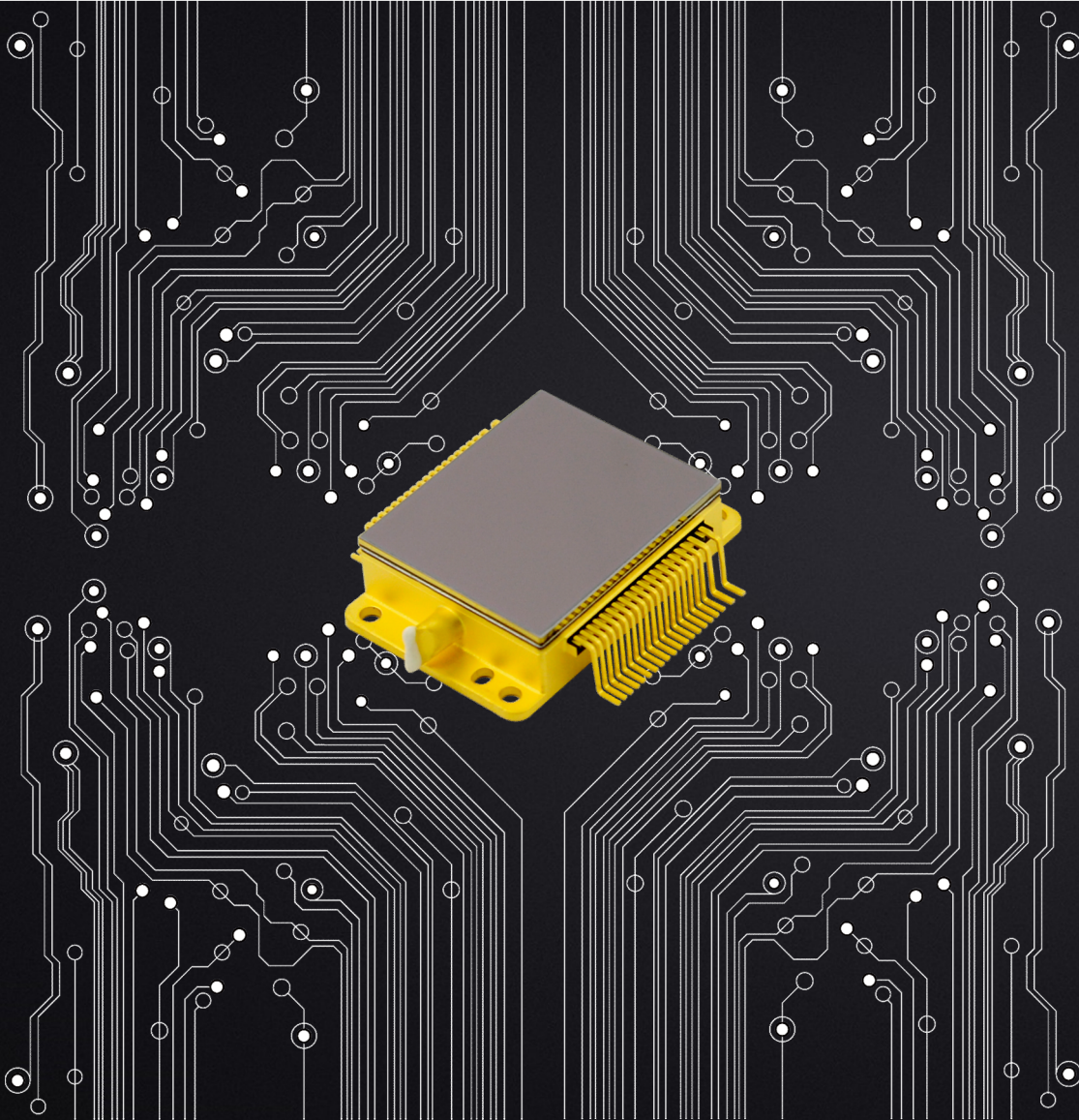
Clearer and Longer, Capturing What You See

# TA Gen2

Featuring high-resolution thermal imaging detectors with 400×300 and 640x480 pixel resolutions respectively and HD OLED displays, TA Gen2 offers image of exceptional quality with high contrast and rich detail. While still being lightweight and modest in size, the attachment's revolutionary battery technology enables it to operate for a prolonged period of time. With other numerous useful features, it is a true thermal upgrade turning day scopes into powerful thermal imaging aiming systems.



## Features



## Upgraded Detector

The TA Gen2 uses high quality 17 $\mu$ m and 12 $\mu$ m thermal imaging detectors with 400 $\times$ 300 and 640 $\times$ 480 pixel resolution respectively to offer an exceptionally sharp image and excellent thermal sensitivity in all weather conditions.

NETD $\leq$ 40mk

## Features

### Double algorithm

The TDE-Tech and PureIR bring crisp, richly contrasted thermal imaging for enhanced identification of targets, their extremities and even the smallest details.



## Features



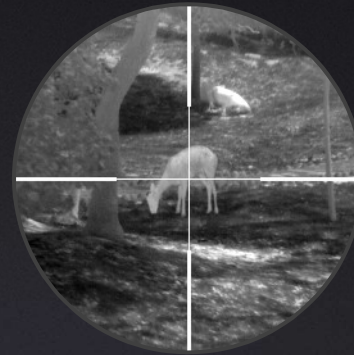
## 7 hours Super Long Battery Life

The standard 18650 battery provide enough power for up to 7 hours of operation time. Quick and simple battery replacement ensures continuous observation without disruptions.

## Features

### Easy Installation & No Re-zeroing

The TA Gen2 promises to rapidly transform a daylight scope into a full-feature thermal optic without the need to re-zero or replace the scope itself, adding thermal imaging functionality to daytime hunting and professional riflescopes.



TA



Daylight Scope



adapter ring



## Features



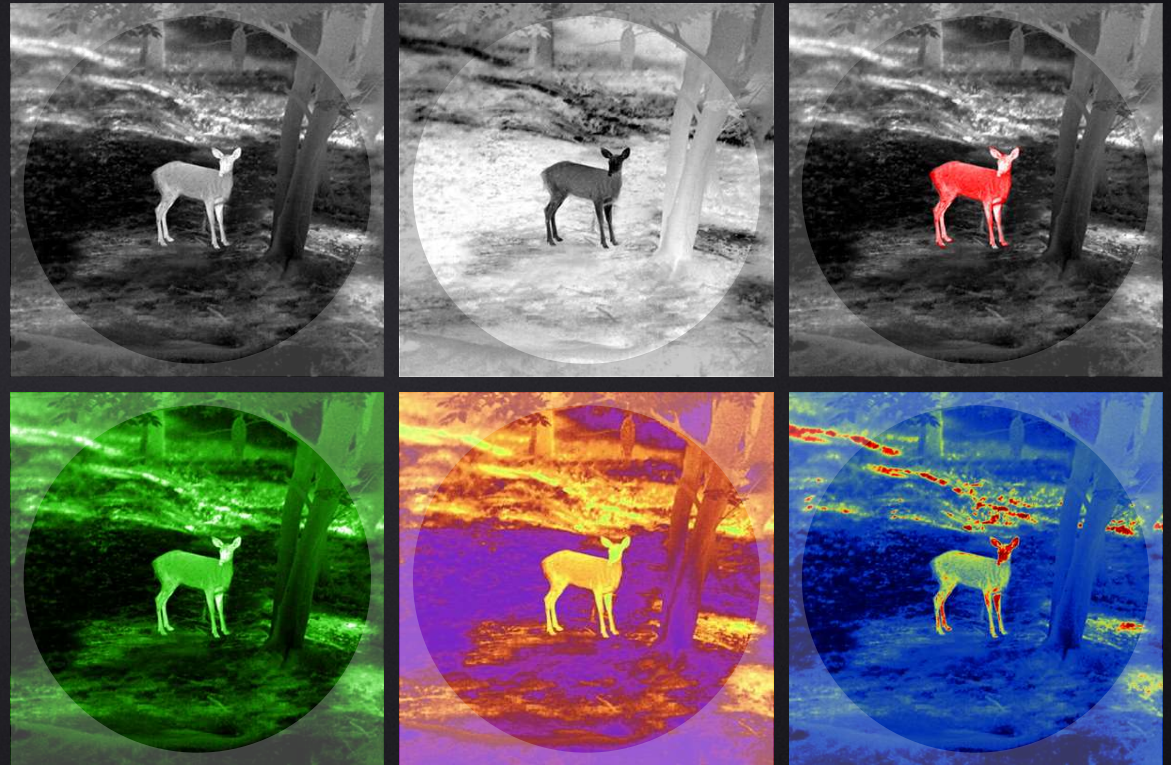
## Multiple scene modes, Highlight Target Clearly

“Enhance/Highlight/Natural” can be quickly switched by one button, the image can be adaptively adjusted for different scenes , “Enhance/Highlight” can effectively reduce image impurities to highlight the target.

## Features

# Multiple Color Palettes to Highlight the Target

Six color palettes: white hot, black hot, red hot, green hot, iron red, blue hot, Support one-button switch to identify the location of the target instantly, helping to achieve all-weather observations.





## Features



Shutter compensation: pressing the power button, users can adjust the image quality according to their own requirements



Scene compensation: users can adjust the image quality after the lens is covered, to achieve silent operation. This benefits the users who mind the operation noise.

## **One-click compensation to make image clearer**

Two compensation methods are available to eliminate pepper noise, image jitter, stripe noise, etc., making images clearer.

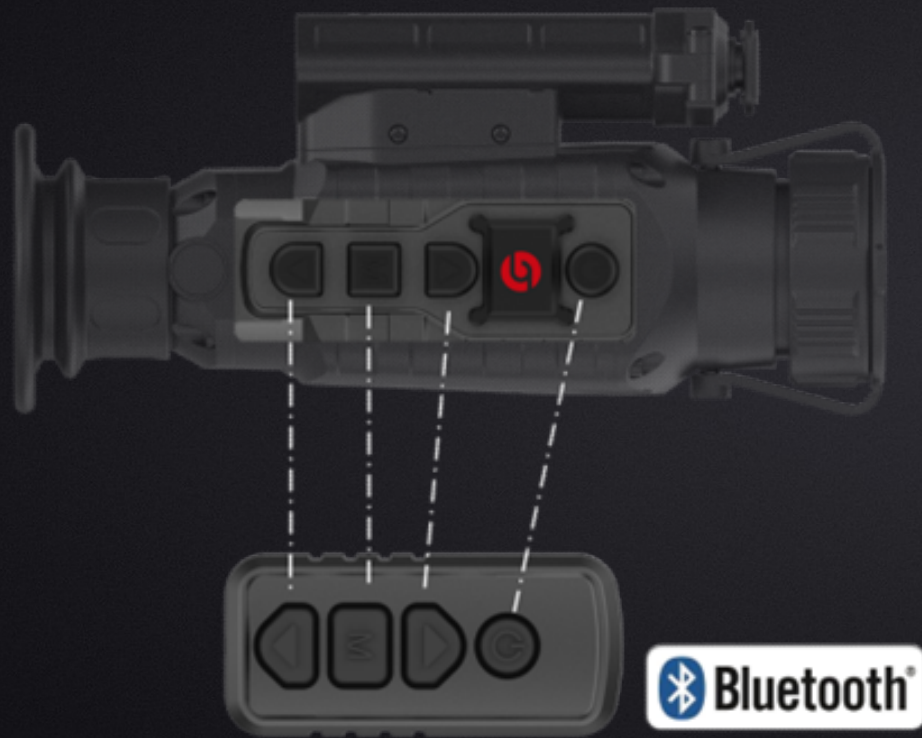
## Features

# IP67 Rated, Rugged and Durable

With IP67 waterproof-rated for protection from heavy-rainfall, dust, and impact. Working temperature is **-30°C to 50°C**, suitable for all kinds of harsh weather. It also passed UN38.3 battery certification, RoHS, CE, FCC, ECA certification, etc.



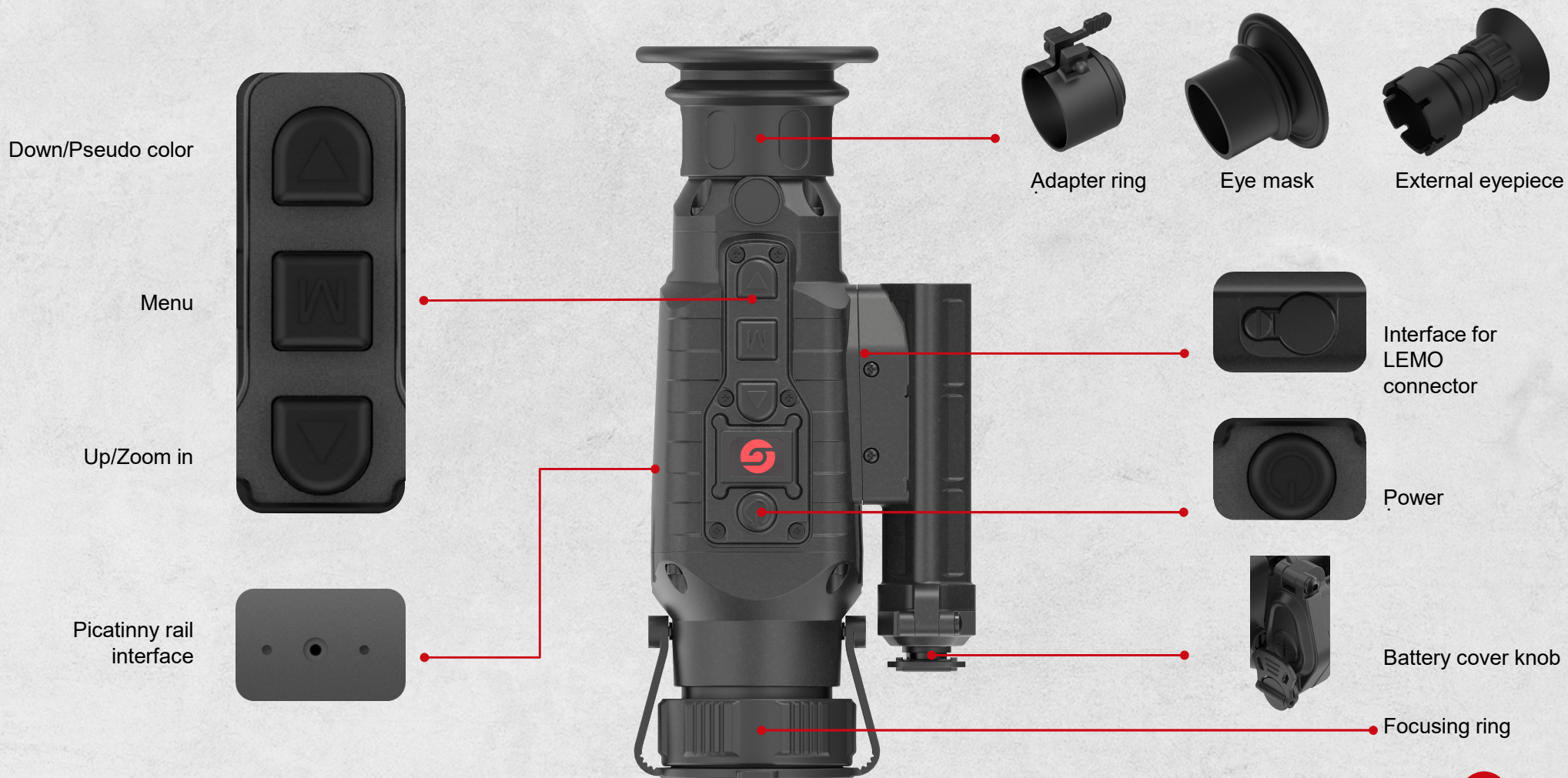
## Features



## Wireless remote control

An optional Bluetooth Controller supports the remote control of the device. It has buttons same as those of the device.

# Component illustration



# Accessories Introduction

www.guideir.com

## Standard



Device



Eye mask



Carry bag



7-pin LEMO to USB cable



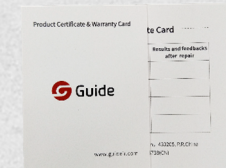
Battery charger



18650 battery



Quick start guide



Warranty card

# Accessories Introduction

[www.guideir.com](http://www.guideir.com)

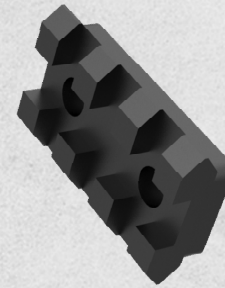
Optional



External eyepiece



Adapter ring



Picatinny rail

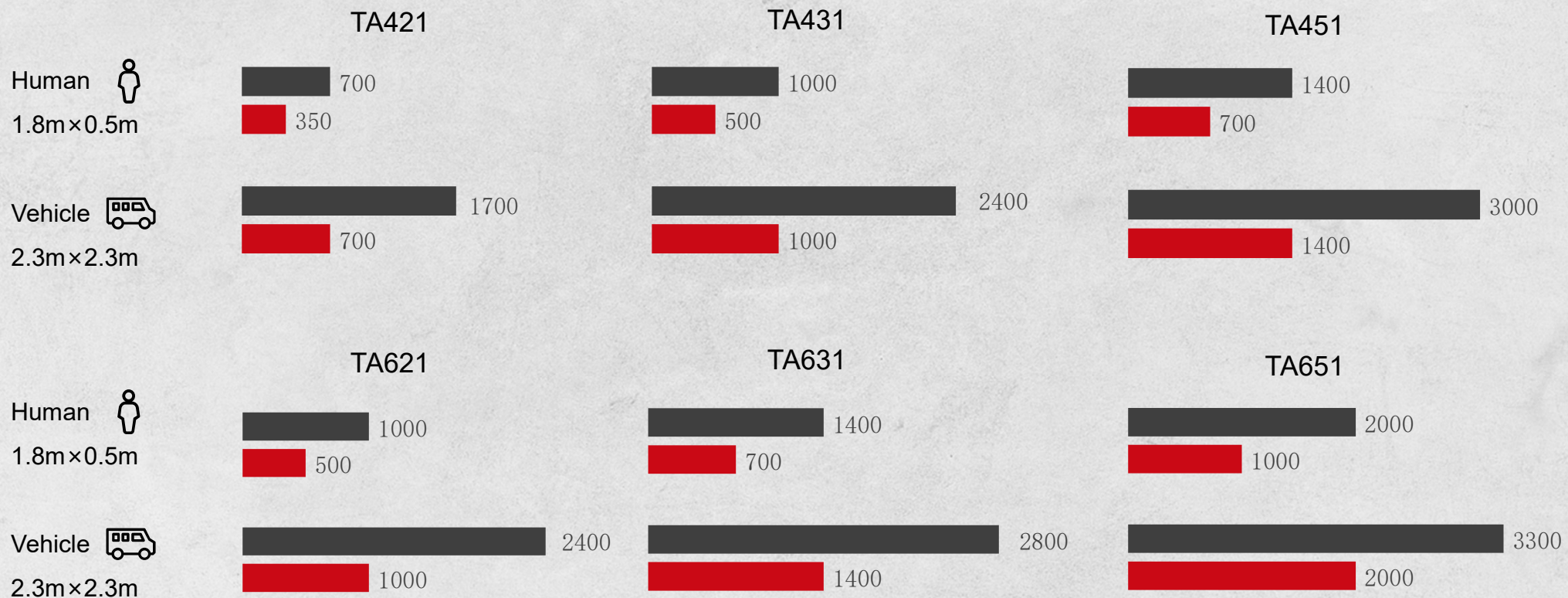


Bluetooth remote control  
(with hook-and-loop  
fastener)



7-pin LEMO to  
USB and AV cable

# Detection & Recognition Range



Detection Recognition Unit: m

# Applications

[www.guideir.com](http://www.guideir.com)



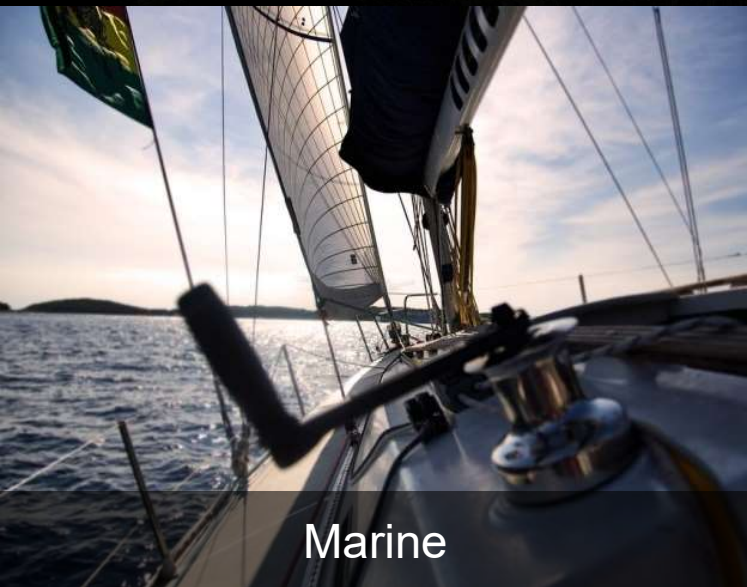
Outdoor



Hunting



Wild Adventure



Marine




Security



Law Enforcement




The background of the entire slide is a silhouette of a man wearing a cap and holding a telescope, standing next to a dog. They are positioned against a sunset sky with clouds and a few birds flying in the distance. The sun is low on the horizon, creating a warm, golden glow.


# Thanks !

Guide Sensmart Tech Co., Ltd.

Loeffelholzstrasse 20, Haus 12 Eingang Nord, 90441 Nuremberg, Germany

T +49 911 2170 7934 E [enquiry@guide-infrared.com](mailto:enquiry@guide-infrared.com)

 [@GuideSensmart](#)

 [@GuideSensmart](#)

[www.guideir.com](http://www.guideir.com)

